



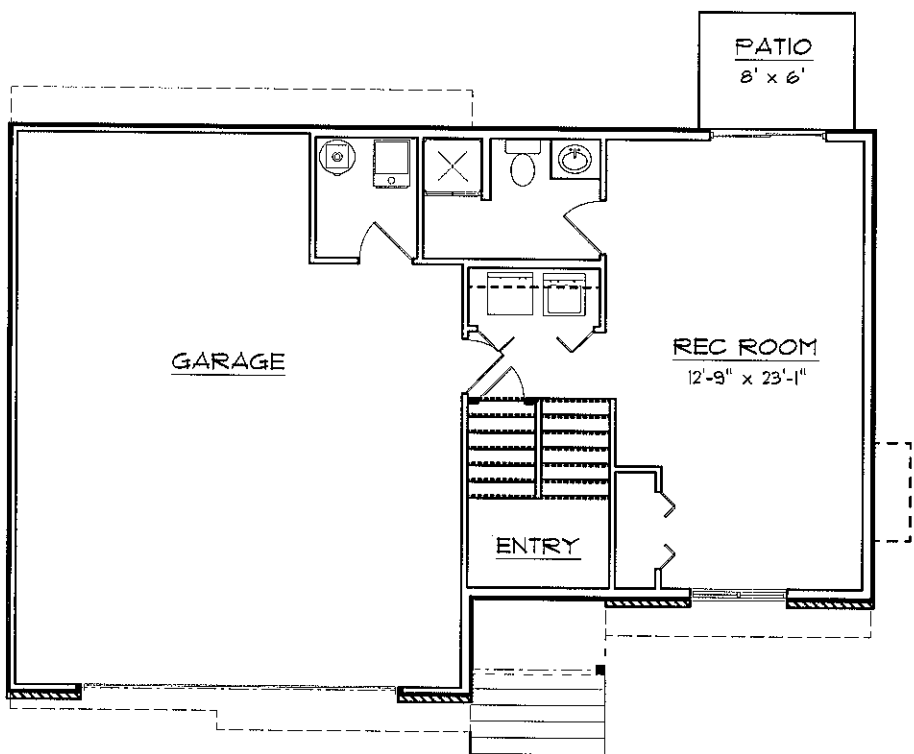
**BIRMINGHAM PLAN
SPLIT-LEVEL**



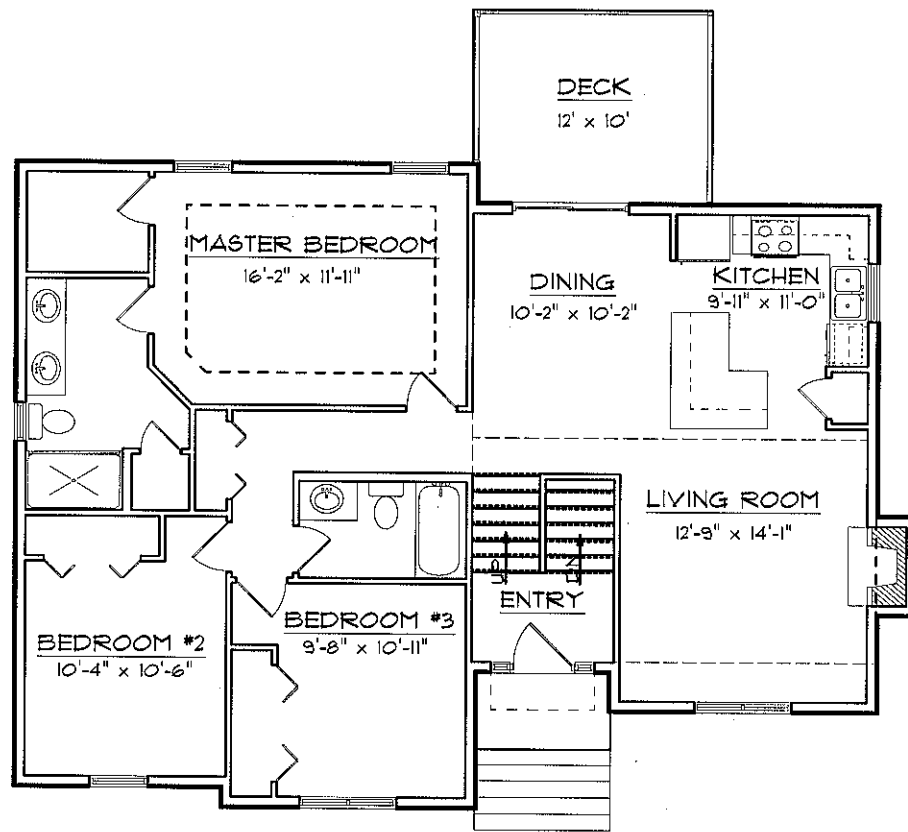
FRONT ELEVATION

- * MASTER BEDROOM WITH WALK-IN-CLOSET
- * SPACIOUS MASTER BATH
- * BOX CEILING IN MASTER BEDROOM
- * LIVING ROOM WITH GAS FIREPLACE
- * VAULTED CEILING IN LIVING ROOM AND DINING ROOM / KITCHEN
- * THREE BEDROOMS ON MAIN LEVEL
- * KITCHEN BREAKFAST BAR
- * LARGE 2 CAR GARAGE
- * PLENTY OF STORAGE

3 BEDROOMS 3 BATHS
FINISHED BASEMENT
MAIN FLOOR: 1294 SQ. FT.
LOWER LEVEL: 446 SQ. FT.
TOTAL SQ. FEET: 1760 SQ. FT.



LOWER LEVEL



MAIN FLOOR

FOR MORE INFORMATION, PLEASE CONTACT:

PRIME VENTURES CONSTRUCTION
WWW.PRIMEVENTURESONLINE.COM
(319) 665-9200



GARY WATTS
MIKE VAN DYKE
(319) 248-0532

LEPIC-KROEGER REALTORS