

PRIME VENTURES CONSTRUCTION

SAXON/VAIL PLAN RANCH DUPLEX WITH BASEMENT



FRONT ELEVATION

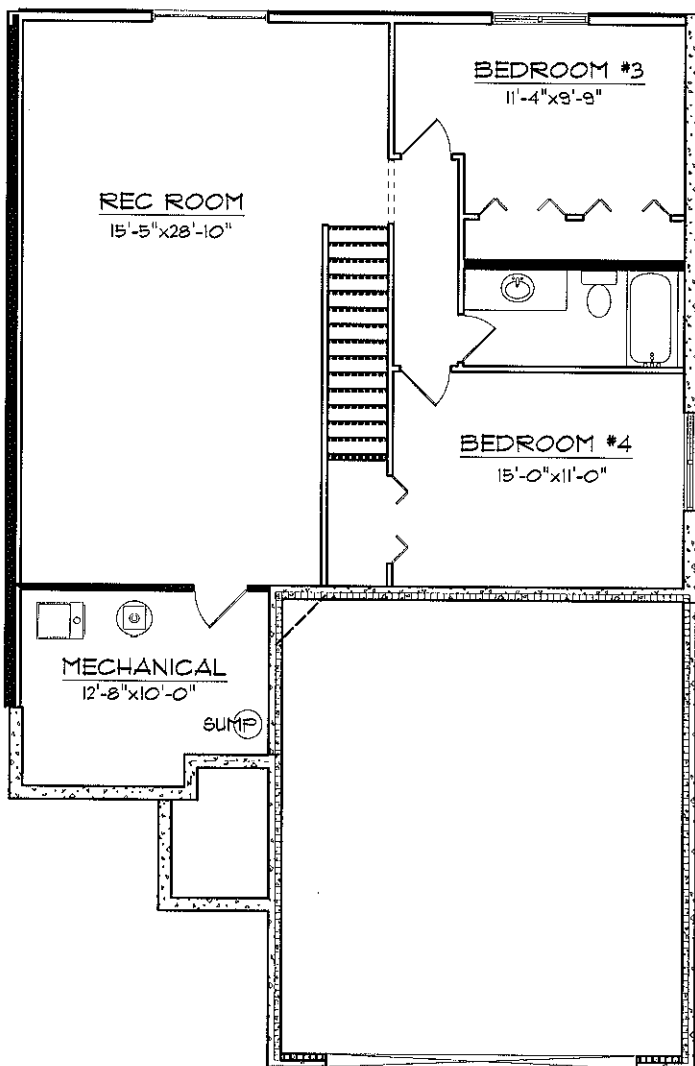
- * MASTER BEDROOM WITH WALK-IN-CLOSET
- * BOX CEILING IN MASTER BEDROOM
- * LIVING ROOM WITH GAS FIREPLACE
- * VAULTED CEILING IN LIVING ROOM AND DINING ROOM / KITCHEN
- * TWO BEDROOMS ON MAIN LEVEL
- * KITCHEN BREAKFAST BAR
- * LARGE REC ROOM ON THE LOWER LEVEL
- * PLENTY OF STORAGE

SAXON

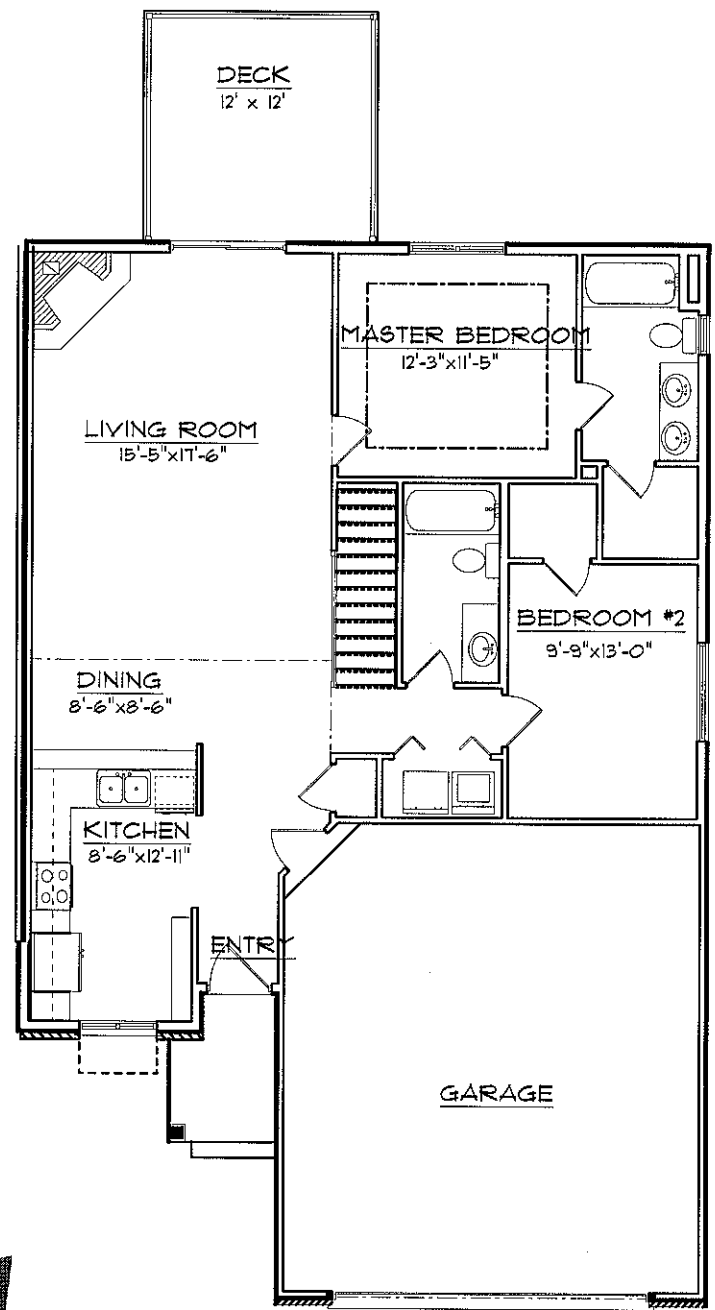
VAIL

4 BEDROOMS 3 BATHS
FINISHED BASEMENT

MAIN FLOOR: 1180 SQ. FT.
LOWER LEVEL: 1000 SQ. FT.
TOTAL SQ. FEET: 2180 SQ. FT.



VAIL LOWER LEVEL



VAIL MAIN FLOOR

FOR MORE INFORMATION, PLEASE CONTACT:

PRIME VENTURES CONSTRUCTION
PRIMEVENTURESONLINE.COM
(319) 665-9200



GARY WATTS
MIKE VAN DYKE
(319) 248-0532

LEPIC-KROEGER REALTORS